

# —siren

HD Camera Drone with Hover Mode

## **DRONE USER MANUAL**



# **ZERO-X<sup>®</sup>**

Capture the skies.™

ZX-SRN

v1

# CONTENTS

<b>1.0</b>	<b>WELCOME .....</b>	<b>04</b>
1.1	BEFORE YOU GET UP IN THE AIR .....	04
1.2	GENERAL SAFETY .....	04
1.3	BATTERY SAFETY .....	05
<b>2.0</b>	<b>PACKAGE CONTENTS .....</b>	<b>06</b>
2.1	SIREN OVERVIEW .....	06
2.2	CONTROLLER OVERVIEW .....	07
<b>3.0</b>	<b>SETTING UP THE ZERO-X SIREN.....</b>	<b>08</b>
3.1	CHARGING THE BATTERY .....	08
3.2	INSTALLING THE BATTERY.....	08
3.3	INSTALLING THE CAMERA.....	09
3.4	INSTALLING A MICRO SD CARD .....	09
3.5	INSTALLING THE DRONES FEET .....	10
3.6	REPLACING ROTOR BLADES.....	10
3.7	INSTALLING ROTOR GUARDS .....	11
3.8	REMOTE CONTROL .....	11
<b>4.0</b>	<b>FLYING YOUR SIREN .....</b>	<b>12</b>
4.1	TROUBLESHOOTING .....	13
4.2	BASIC CONTROL.....	13
4.3	360 FLIPS .....	14
4.4	DIRECTIONAL LOCK.....	14
4.5	SPEED MODE.....	14
4.6	TRIMMING .....	15

<b>5.0</b>	<b>USING THE SIRENS CAMERA.....</b>	<b>15</b>
5.1	VIEWING YOUR PHOTOS AND VIDEOS.....	16
<b>6.0</b>	<b>DRONE MAINTENANCE .....</b>	<b>16</b>
6.1	REPLACEMENT PARTS.....	16
<b>7.0</b>	<b>WARRANTY AND TERMS &amp; CONDITIONS.....</b>	<b>17</b>
	<b>NOTES .....</b>	<b>18</b>

## 1.0 WELCOME

Thanks for purchasing a Zero-X Siren, get ready to have the time of your life! We're sure your Zero-X Siren will bring you a world of great experiences in the air. Please take the time to read the following safety warnings and operating instructions carefully.

## 1.1 BEFORE YOU GET UP IN THE AIR

Connect the Siren battery to the included USB charging cable and insert the USB charging cable into the supplied USB wall charger. While the battery is charging please take the time to read the instructions and familiarise yourself with the controls of your Zero-X Siren.

## 1.2 GENERAL SAFETY

Please familiarise yourself with your local legislation regarding drone usage before you begin using your Zero-X Siren. Included in the package contents of your Zero-X Siren are the Australian CASA guidelines, please read carefully and understand this information as operating a drone outside of these guidelines may result in legal issues. Zero-X takes no responsibility for operation of this product outside of what is legally permissible in your area.

- Do not fly your Siren any closer than 30 metres from people, animals or buildings. Check to make sure you are no closer than 5.5 kilometres from any airfields or airports. For more information on CASA's Australian legislation visit: <http://www.casa.gov.au/>

For information outside Australia please visit the website of your local aviation authority.

- Do not attempt to modify the Siren or any of its components in any way, doing so will void your warranty and may affect the operation of the drone.
- Do not use the Siren in any conditions that could affect, damage or impair your view of the Siren including rain, wind, snow, fog or low light. Avoid getting your Siren wet, dusty or sandy. These elements will damage the components of your Siren.
- Please do not attempt to touch the Siren when the Remote Control is powered on, or if the rotor blades are turning.
- When flying your Siren, please keep in mind the privacy of others.

## IMPORTANT INFORMATION - PLEASE READ BEFORE USE

### 1.3 BATTERY SAFETY

When handled incorrectly, Lithium polymer batteries can be dangerous and can potentially harm and do damage to persons or property. Zero-X does not accept any liability for damage to persons or property if the battery is not correctly charged, stored or protected.

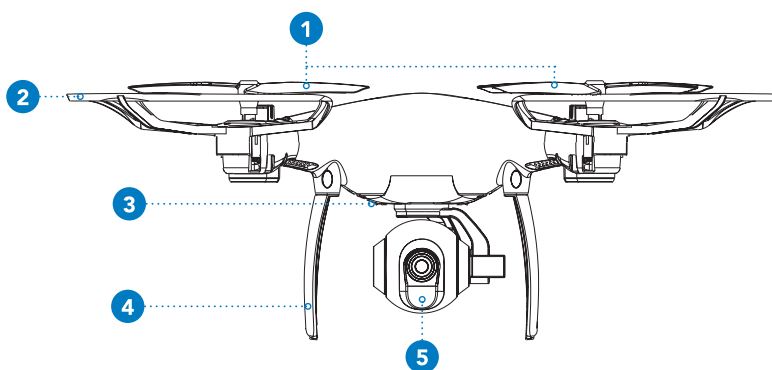
- Always unwind all cables before charging.
- Do not over charge the battery. Once the charging process is completed, remove the battery from the charger as soon as possible.
- Only use the included or replacement Zero-X Siren chargers and batteries.
- You must charge the Lithium polymer battery in a safe area away from flammable materials.
- The battery is only to be charged under adult supervision, do not leave charging batteries unattended. You should always remain in constant observation to monitor the charging process and react immediately to any potential problems that may occur.
- Do not charge the battery in temperatures hotter than 40°C or colder than 0°C.
- Do not cover the batteries when charging. Do not leave batteries in direct sunlight.
- After each flight & or crash, please check battery for any damage or swelling.
- If the battery is damaged, leaking, making noise, punctured or malformed in any way DO NOT attempt to use it. Please dispose of the battery immediately and safely in the correct manner.
- Do not bend, puncture, crush or scratch the drone's battery. Do not store batteries in your pockets, on your person or in extreme temperatures.
- After flying/discharging the battery you must allow it to cool to ambient room temperature before recharging.
- If at any time during the charge or discharge process the battery begins to balloon or swell, discontinue charging or discharging immediately. Quickly and safely disconnect the battery, then place it in a safe, open area away from flammable materials to observe it for at least 15 minutes. Continuing to charge or discharge a battery that has begun to balloon or swell can result in a fire. A battery that has ballooned or swollen even a small amount must be removed from service completely.
- Never plug in a battery and leave it to charge unattended overnight.
- Non-compliance with the above warnings may result in the failure of the battery.

## 2.0 PACKAGE CONTENTS

- |                      |                         |
|----------------------|-------------------------|
| 1. Siren Drone       | 6. Rotor Guards         |
| 2. Remote Controller | 7. Feet                 |
| 3. Charging Cable    | 8. USB Charging Adapter |
| 4. Rotor Blades x 4  | 9. Camera               |
| 5. Battery           | 10. Manual              |

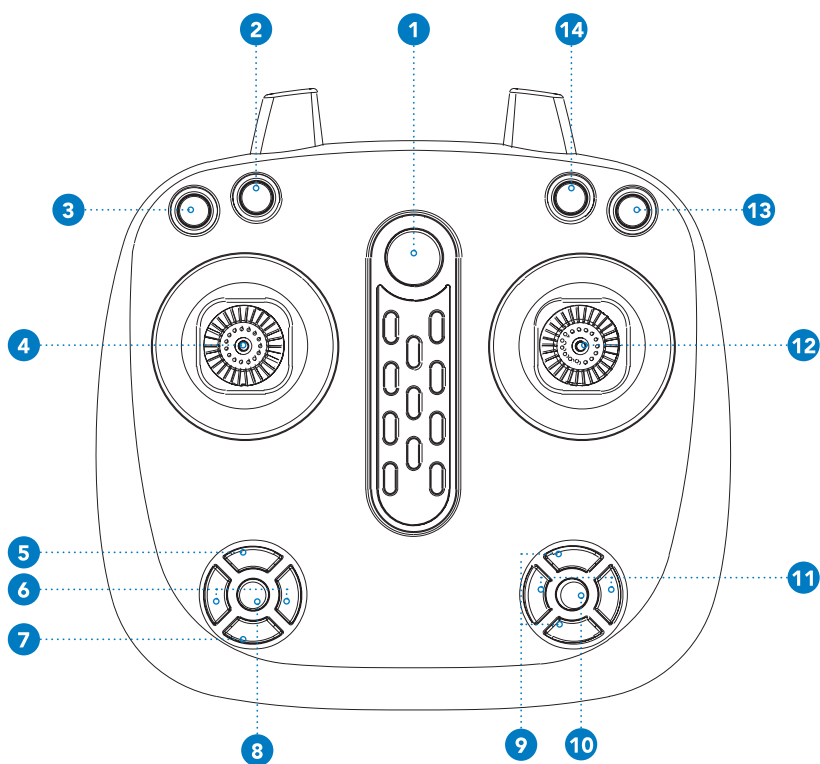
## 2.1 SIREN OVERVIEW

- |                 |           |
|-----------------|-----------|
| 1. Rotor Blades | 4. Feet   |
| 2. Rotor Guards | 5. Camera |
| 3. Power Button |           |



## 2.2 CONTROLLER OVERVIEW

- |                            |                         |
|----------------------------|-------------------------|
| 1. Power Button            | 8. Emergency Stop       |
| 2. Photo/Video Button      | 9. Pitch Trim           |
| 3. Speed Mode              | 10. Directional Lock    |
| 4. Left Thumb Stick        | 11. Roll Trim           |
| 5. Tilt Camera Forward     | 12. Right Thumb Stick   |
| 6. Yaw Left and Right Trim | 13. 360° Flip           |
| 7. Tilt Camera Back        | 14. One Button Take Off |



## 3.0 SETTING UP THE ZERO-X SIREN

### 3.1 CHARGING THE BATTERY

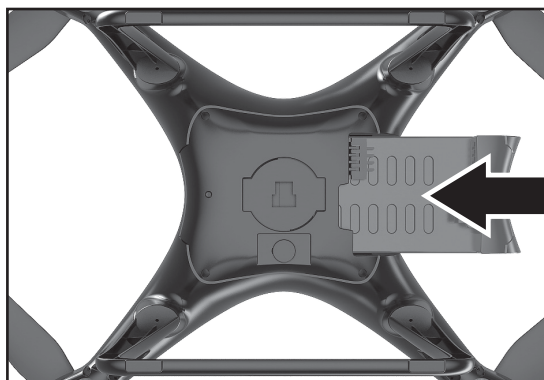
Fully unwind the included USB charging cable and plug the USB end into the included Zero-X Certified USB AC charging adapter. When connected to a charging source the LED light in the charger will glow red.

Connect the drone battery to the charging cable and the light will switch off indicating charging is in process. The LED on the USB charging cable will glow red again once charging is complete. To keep the battery life as long as possible avoid removing the battery from the charging cable before charging is complete. If you have just finished flying your Siren drone, please allow the battery to cool down for at least 30 minutes before recharging.

- When the Siren battery has finished charging it is advised that the battery is removed from the charger as soon as possible. Overcharging will damage the battery and permanently effect the flight time.
- The Siren battery can take up to 90 minutes to fully charge. If the battery has been on charge for any longer than 2 hours and the indicator on the charging cable is not showing that the battery is charged please remove the battery from the charger.
- When connecting the USB cable with the battery, make sure to follow the guides on the battery connector as these are designed to only be inserted in one direction. Forcing the connection in the incorrect direction, may cause damage to the battery and charging cable.

### 3.2 INSTALLING THE BATTERY

To install the Siren battery simply slot the battery into the battery slot on the rear of the drone ensuring that the battery is in the correct orientation (USB Micro connection on the top side) and that the battery is firmly inserted until it clicks into position.





### 3.3 INSTALLING THE CAMERA

The camera on the Siren comes detached.

It is advised once the camera is attached to the drone it is not removed to avoid damaging the connections.

To install the camera please follow the instructions below.

1. Connect the cameras large and small cables to the Siren drone making sure not to put tension on the cables and ensuring that the plugs are in the correct orientation (attempting to plug the connection in the incorrect orientation may damage the connection pins).
2. Slot the camera mount into position with the camera facing the power button and press in so the camera mounts locking pegs clear the drones mounting lock.
3. Lock the camera in position by turning the camera 90° so the camera is now facing the front of the drone.

### 3.4 INSTALLING A MICRO SD CARD

If you intend to record video or take pictures with the Siren's camera during your flight you will need to have a Micro SD Card installed (Micro SD Card not included).

The Siren's camera is compatible with Micro SD Cards class 6 and above with a capacity up to 32GB.

To install a Micro SD Card, please follow the instructions below.

1. Ensure that the drone is powered off and the camera is correctly installed.
2. Insert the Micro SD Card into the rear of the drones camera with the copper contacts facing upward.
3. Press the Micro SD Card into the rear of the drone until the card clicks into place.

#### **Note**

Do not force the Micro SD Card. If you are having difficulty please make sure you are inserting card in the correct orientation. Forcing the Micro SD Card can potentially damage Siren's camera or your Micro SD Card.

### 3.5 INSTALLING THE DRONES FEET

The Siren's feet are used for take-off and landing. It is important that you install the Siren's feet before you attempt to fly your Siren.

To install the Siren's feet please follow the instructions below.

1. Insert the feet pegs into the feet sockets on the underside of the Siren.
2. Fasten the feet to the Siren with the included screws.

### 3.6 REPLACING ROTOR BLADES

The Siren's rotor blades can be replaced if they are damaged.

The Siren comes with two types of Rotor blades, Clockwise and Counter Clockwise.

The Clockwise Rotor Blades are marked with an A.

The Counter Clockwise Rotor Blades are marked with a B.

It is important when replacing the Rotor Blades that the original blade is replaced with the correct replacement. Replacing a Rotor Blade with an incorrect replacement will prevent the Siren from taking off and can potentially damage your Siren's motors.

For a guide to the Rotor Blade correct positioning please see the guide below.

The guide is written from the perspective of facing the Siren head on.

<b>Front Left</b>	<b>Counter Clockwise</b>	<b>B Rotor Blade</b>
<b>Front Right</b>	<b>Clockwise</b>	<b>A Rotor Blade</b>
<b>Back Left</b>	<b>Clockwise</b>	<b>A Rotor Blade</b>
<b>Back Right</b>	<b>Counter Clockwise</b>	<b>B Rotor Blade</b>

To replace the rotor blades please follow the instructions below.

1. Remove the cap from the top centre of the rotor blade that you want to replace by levering the cap off with your thumb nail.
2. Removing the cap will reveal the rotor blades fastening screw, remove the fastening screw by unscrewing it counter clockwise with a small phillips head screwdriver.
3. Remove the rotor blade by pulling it upward off of the motor stalk.
4. Replace the rotor blade making sure to replace it with the equivalent blade A for A, B for B.

5. Press the replacement into position making sure to align the hexagonal shape of the motor stem with the hexagonal shape of the rotor blade socket.
6. Fasten the blade back in position using the screw that was removed in step 2 making sure not to over tighten the screw.
7. Replace the cap that was removed in step 1 by pressing it back into position.

### 3.7 INSTALLING ROTOR GUARDS

The Rotor Guards are used to protect the Sirens Rotor blades and motors from light bumps and knocks while flying.

To install the rotor guards please follow the instructions below.

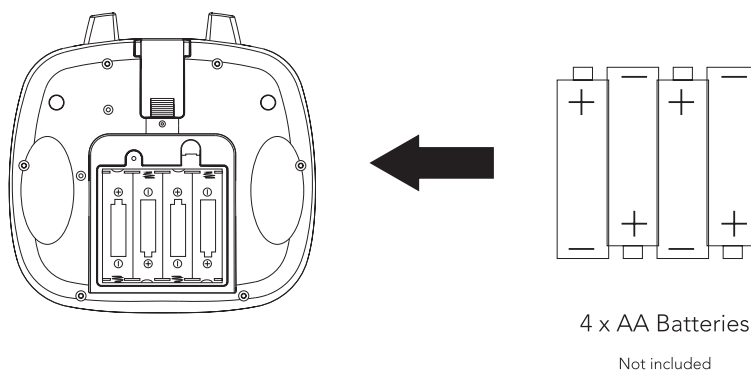
1. Insert the Rotor Guard pegs into the sockets on the end of the arms of the Siren.
2. Fasten the Rotor Guards to the Siren with the included screws.

### 3.8 REMOTE CONTROL

The Remote Controller requires four AA batteries to work.

To install batteries in the controller please follow the instructions below.

1. Remove the battery hatch lid by removing the securing screw and pushing the tab downward.
2. Insert four new AA batteries of the same brand into the remote controllers battery hatch in the orientation shown below.
3. Re attach the battery hatch lid and resecure the securing screw.

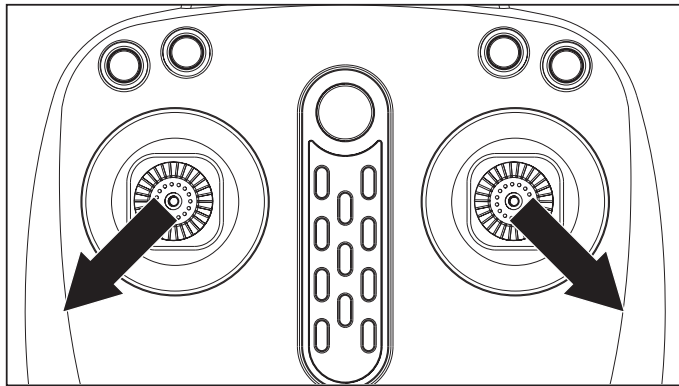


## 4.0 FLYING YOUR SIREN

Please read through all the instructions below before attempting to launch the Siren.

To launch the Siren please follow the instructions below.

1. Check your surrounding and ensure that your intended flight area conforms to your local laws.
2. Ensure that the Siren battery is fully charged and the Remote Controller has batteries with an adequate amount of charge
3. Power up the Siren by holding the power button for 5 seconds.
4. Place the Siren on a section of flat level ground that you want to launch from and stand back a safe distance (5m).
5. Power up the Remote Controller by pressing the power button.
6. The drones lights will flash quickly while pairing, once the lights stop flashing quickly the drone is ready to launch.
7. Once you are ready to launch the drone hold the left thumb stick in the lower left position while holding the right thumb stick in the lower right position. This will unlock the motors and launch the drone.

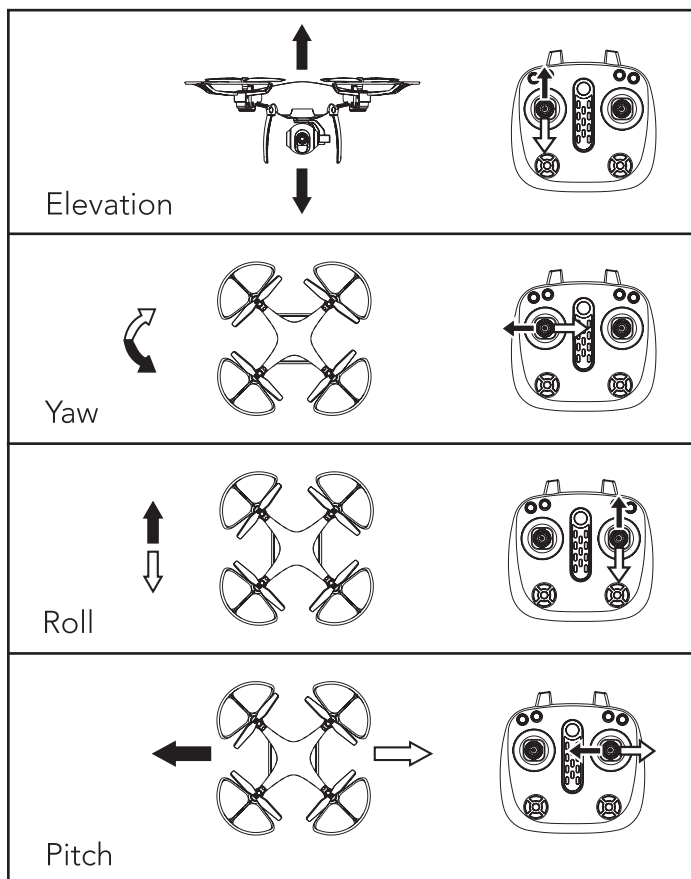


8. To increase the altitude of the Siren, press the left thumb stick upward.

## 4.1 TROUBLESHOOTING

- Do not approach the drone again until the remote has been powered off. If for any reason the Siren does not work after following the above steps please check the following.
- The Siren battery is fully charged, correctly connected and not damaged.
- The batteries in the remote control are the same brand, have an equal amount of charge and have enough charge to power the remote control correctly (using an assortment of batteries will affect the performance of the remote control).
- If the drone is drifting without the influence of surrounding atmospheric factors, use the trimming controls to adjust the drone's idling motor power.

## 4.2 BASIC CONTROL



## 4.3 360 FLIPS

The Siren is capable of 360 flips.

To perform a flip please follow the instructions below.

1. While flying make sure you have a clear space of 2-3 meters below the drone as when the drone flips it will lose altitude.
2. Press the 360 flip button on the top right of the controller and tilt the right thumb stick in the direction that you want to flip.
3. The drone will then flip in your desired direction and then restabilise.

## 4.4 DIRECTIONAL LOCK

Directional Lock mode is a mode that makes it easy for beginners to fly. In this mode the direction you and the Siren are facing when the Siren is launched will always be forward on the controls, no matter which way the Siren is facing. This means that even if you can't see which way the Siren is facing you will be able to bring the drone back towards yourself by pulling back on the Right Thumb stick (Pitch/ Roll).

To activate Directional Lock before launching the drone ensure that you are facing the same direction as your Siren drone and press the round Directional Lock button

## 4.5 SPEED MODE

The speed mode button is used to switch the Siren's speed.

When you power up the drone it will start in low speed mode.

Press the Speed Mode button and the remote will beep twice indicating that you are in mid speed mode.

Press the Speed Mode button again and the remote will beep three times indicating that you are in high speed mode.

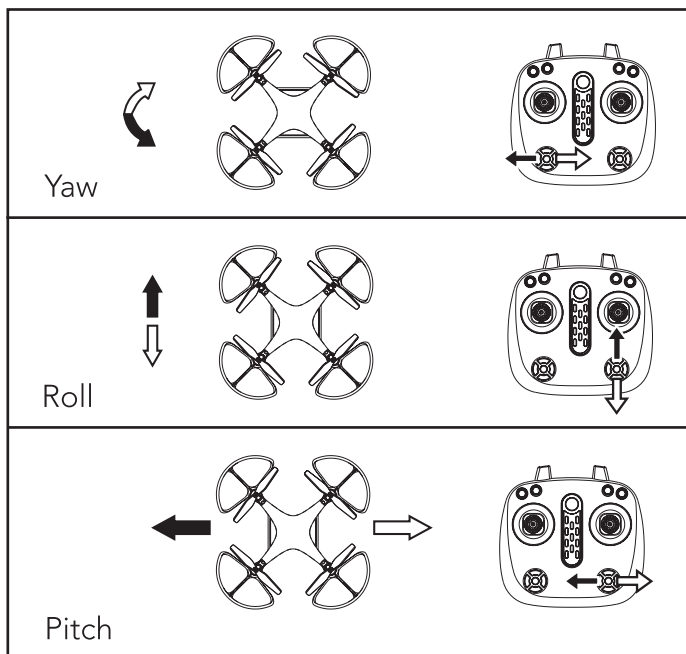
Press the Speed Mode button a third time and the Siren will return to low speed mode

## 4.6 TRIMMING

Trimming is used to adjust any drift that the Siren may have while flying.

Before adjusting the trimming make sure that any drift is not a result of any atmospheric influence.

Please see the guide below on adjusting your Sirens trim.



## 5.0 USING THE SIRENS CAMERA

The Siren's onboard camera can be used to Take photos and videos and can be remotely adjusted using the remote control.

### To Record Video

Hold the Photo/Video Button on the top left of the remote control for 2 seconds

### To Capture a photo

Short press the Photo/Video button at the top left of the remote control.

### To Adjust the Camera Angle

Use the up and down camera tilt button in the bottom left of the remote control.

## 5.1 VIEWING YOUR PHOTOS AND VIDEOS

To view your footage and videos you will need to connect the Micro SD Card to your computer via either a USB Micro SD Card reader or via a SD card converter if your computer has an SD card reader.

Once connected to your computer the SD card will appear as a removable drive which will contain your videos and photos.

## 6.0 DRONE MAINTENANCE

Avoid exposing your Siren and its accessories to dust, sand and moisture as these can damage the Siren. If the Siren is exposed to dust or sand, use a soft brush to remove any visible particles.

## 6.1 REPLACEMENT PARTS

We understand that it's not always easy learning how to fly a drone, and sometimes a close call can turn into a crash landing. To thank you for your support of Zero-X purchase and to help you build your confidence in learning how to fly your drone we want to offer you 50% off your first order of any spare parts by using the code below on [www.zero-x.com.au](http://www.zero-x.com.au). There you will be able to find and buy the spare parts listed below.

- Battery
- Counter Clockwise Motor
- Clockwise Motor
- Rotor guards





## 7.0 WARRANTY AND TERMS & CONDITIONS

Our goods come with guarantees that cannot be excluded under the Australian and New Zealand Consumer Law. You are entitled to a replacement or refund for a major failure and for compensation for any other reasonably foreseeable loss or damage. You are also entitled to have the goods repaired or replaced if the goods fail to be of acceptable quality and the failure does not amount to a major failure.

This warranty is provided in addition to your rights under the Australian & New Zealand Consumer Law.

Zero-X warrants that this product is free from defects in material and workmanship for a period of 12 months from the date of purchase or for the period stated on the packaging. This warranty is only valid where you have used the product in accordance with any recommendations or instructions provided by Zero-X.

This warranty excludes defects resulting from alterations of the product, accident, misuse, abuse or neglect.

In order to claim the warranty, you must return the product to the retailer from which it was purchased or if that retailer is part of a National network, a store within that chain, along with satisfactory proof of purchase. The retailer will then return the goods to Zero-X. Zero-X will repair, replace or refurbish the product at its discretion. The retailer will contact you when the product is ready for collection. All costs involved in claiming this warranty, including the cost of the retailer sending the product to Zero-X, will be borne by you.

**Zero-X Address:** 33 Quinn Drive, Keilor Park ,Victoria 3042 Australia

**Ph:** +61 03 8331 4800 **Email:** [service@zero-x.com.au](mailto:service@zero-x.com.au)

## NOTES

[illegible]

[illegible]

# —siren

Capture the skies.™

**ZERO-X**

[www.zero-x.com.au](http://www.zero-x.com.au) | [www.zero-x.co.nz](http://www.zero-x.co.nz)

CE FC      
All Images, Information and Content are  
Copyright © 2018 Directed Electronics  
Australia Pty Ltd. All Rights Reserved.

© Zero-X v1.0 2018